



Lynwood Times

A newsletter for the community of Lynwood Park Public School

Great Expectations - Great Attitudes - Great Achievements - Great School

14th Aug 2020

T3 W4 **Dates for** **Your Diary**

Aug 17
Year 5 Check-In Assessment

Aug 18
1960s Mufti Day and Disco

Start of ICAS competitions

Aug 19
Staff Twilight Mandatory CPR Training

Aug 24-Sep 4
Swim Scheme

Aug 24-Sep 18
K-2 Gymnastics

Sep 4
60s Art Comp Entries Due

Sep 9
60s Games and Sports Afternoon

Sep 10
School Photos

Sep 11
60s Writing Comp Entries Due

Sep 23, 24
Dental Visit

Sep 24
Longneck Lagoon Leadership Day

Principal's Message

Dear Parents and Carers

Another 2 weeks have flown by. Despite the COVID-19 restrictions, it looks like 2020 is going to be another year where we blink and we've missed it!

Kindergarten Enrolments for 2021 We are currently taking enrolment applications for Kindergarten 2021. If your child will turn 5 before July 31st next year, they are eligible to enrol in a government school for kindergarten intake in 2021. Application forms are available from the office. Please note that the department has tightened out-of-area enrolment procedures and while enrolment is automatic for in-area students, it may be problematic if you are trying to enrol at a school that is not your designated in-area primary school. If you have a neighbor who has a school aged child, please pass on this information to them – particularly if they don't already have a child enrolled here at Lynwood Park. We have attached a map of our intake area for your convenience.

Education Week and School Athletics Carnival Week 3 was Education Week. The children took great pride in putting together their work portfolios for you to look at and we hope you enjoyed them. During Week 3, we also held our Athletics Carnival. It was scaled back to just track events but the students had fun and did their best. Also, it was a lovely day so we had a good excuse to have them out in the fresh air for an extended period of time to run and compete and cheer each other on.

School Photos Our main school photo day will be Thursday 10th September. We will be using the same photography company as last year – AdvancedLife. It is their preference that photo orders and payments be made online to reduce potential misunderstandings and lost money on the day. Please make sure to read the article later in the newsletter for login details.

New Restrictions The department announced new restrictions as at this morning on what can and cannot happen in schools with relation to the coronavirus. Ones that affect us are:

- * All community user groups must have a COVID-19 Safety Plan
- * SRE/SEE volunteers may attend. Classes are restricted to a maximum of 50 for no longer than one hour with a preference for them to be held outside. No singing or chanting.
- * P&C social events or functions are not permitted. P&C meetings to be held online.
- * Choirs and music groups involving woodwind instruments are to cease.

Tell Them From Me – Parent Survey The parent online survey for this valuable information gathering activity is now available. A detailed explanation of the survey is attached to this newsletter. Please assist the school in its planning for next year by completing the survey at:

<http://nsw.tellthemfromme.com/lpps> The more parents who complete the survey, the more valuable the information is to our planning.

Have a great fortnight – Mrs Leigh Bade – Principal

2020 Premier's Reading Challenge

Just a reminder that the Premier's Reading Challenge (PRC) finishes at the end of this month. If you are a Year 3, 4, 5 or 6 student, you need to enter the books that you have read into the student reading record in the PRC website.

Remember to use the username and password that you use at school to access the site.



The rules and other information are available on this website. You are allowed to add extra 'free choice' books due to the COVID-19 lockdown restricting access to libraries. If you have any problems, please come and see me. I hope that you have enjoyed reading your books.

Mrs Gould

Silver Awards – Term 3 2020

Renee S 4/5M
Zac M 3/4C
Riley D 4/5M
Lara L 4/5M
Robbie B 1/2Y
Chloe H 1/2Y
Sara L 1/2Y
Aliyah A 1/2Y
Rafael M 1/2Y
Savanah S 3/4C

David L 4/5M
Mere S 4/5M
Chloe V 4/5M
Alysha T 3/4C
Daniel E 3/4C
Aydin Z 3/4C
Abirami R 3/4C
Lucas C 3/4C
Thrishaa N 5/6A
Gurshaan P 5/6A

Natasha B 5/6A
Noah P 5/6A
Emily S 5/6A
Amelia J 4/5M
Zohal Q 4/5M
Gabriel T 4/5M
Murat J 5/6T
Paige M 5/6T
Tahlia R 5/6A
Caleb W 5/6A

Congratulations Silver Award students! Good job!

Gold Awards – Term 3 2020

Kgaon K 3/4C Clara S 3/4C Alev M 3/4C

Great Work Gold Award Students!

Last Newsletter's Word Wizards

Word: **enigma**

Meaning: **a person or thing that is mysterious or difficult to understand**

Word Wizards:

Kabir Q (5/6A), Gurshaan P (5/6A)

Word of the Week

ingratiate

Students who see Mrs Bade in her office (after asking nicely with the office ladies first) and who can explain properly what this word means, wins a little prize!

Also, you have to know how to pronounce it!



Quote of the Week

"If everyone demanded peace instead of another television set, then there'd be peace."

John Lennon 1940 - 1980

Brian the Lion is really happy to announce the Week 4 award recipients!

Citizenship: Zalah G (KB), Nathan P (3/4R)

Sportsmanship: Cooper S (2P), Paige M (5/6T)

Values – Hardworking K-2: Preston B (1/2O), Reyaanveer B (1/2Y)

Values – Hardworking 3-6: Joanne Y (5/6A), Levi M (4/5M)

Principal's Awards: Arayah G (KR) for striving to achieve her best work
Ayden C (3/4C) for being a responsible friend



K-2 GOT IT

Got It! Tip of the Week

Making time to play with your child is one of the most important things you can do together. The time you spend playing together builds your connection. It also helps your child to build confidence, to develop social and communication skills, and to foster a sense of feeling loved, happy and safe. Sometimes you might just sit with your child and watch them play, other times it might be fun to get involved and follow their lead with a game. Play can involve many things like Lego, board games, card games, dance and music, imaginative games, and reading stories.



raising children network
the Australian parenting website

WEBSITE: An *Australian resource for parenting*
newborns to teens
www.raisingchildren.net.au

SCHOOL PHOTOGRAPHS WILL BE TAKEN ON:

Thursday 10 September 2020

advancedlife
photography & print specialists

ORDER NOW go to www.advancedlife.com.au and enter the code

THB H6L 8EH

Dear Parents,

School photographs are scheduled to be taken by advancedlife. Whilst an envelope and flyer have been distributed, if possible it is our preference that ordering be completed online to reduce administration and potential security issues related to the return of cash and envelopes on photo day.

Orders for packages and sibling photographs can be placed securely online at www.advancedlife.com.au using our school's unique 9 digit advanced order code. Portrait and group package orders are due by photography day.

Should you wish to purchase a sibling photograph online, the order must be placed no later than the day before photography day. Sibling photographs will only be taken if an order has been placed.

Should you have any queries concerning school photographs or online ordering, please contact us at www.advancedlife.com.au/contact

1/2Y and 3/4R – Buddy Classes

Work is much more fun when you get a visit from your Buddy Class!

On Wednesday afternoon, 1/2 Yellow visited 3/4 Ruby for an art lesson. We talked about patterns and then each student from 3/4R buddied up with a student from 1/2Y. Each student had a piece of patterned fabric glued to paper and had to match and draw the rest of the pattern/s using pencil, crayon or texta.

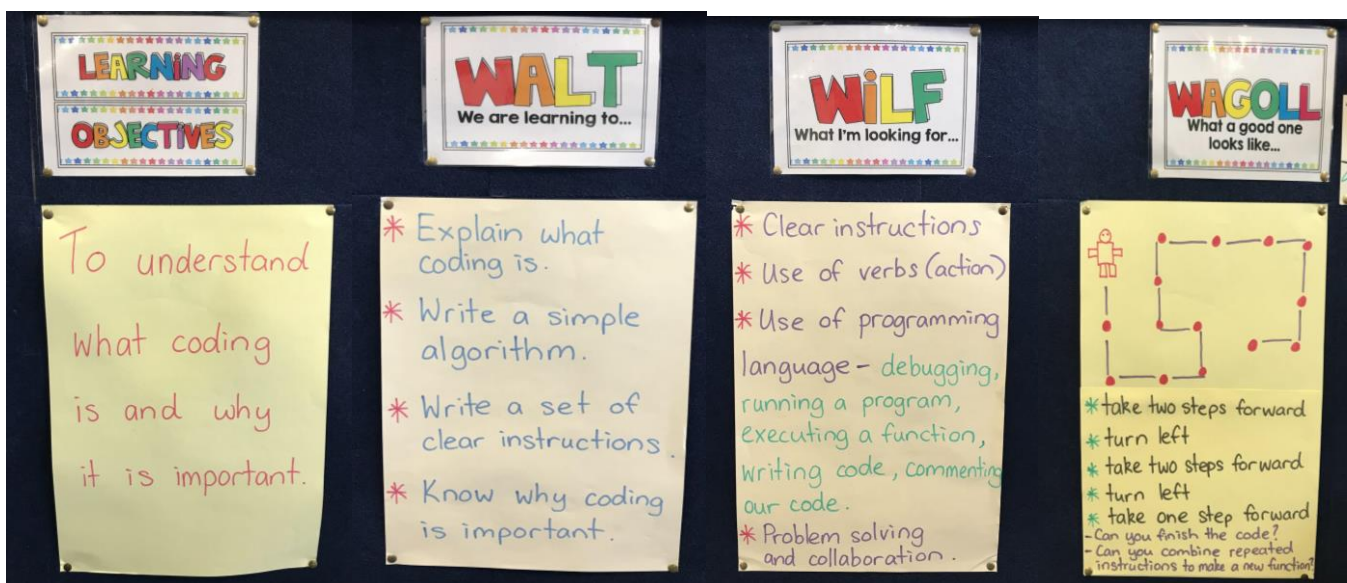
It was lovely to see the students from each class discussing how to create the patterns, working together and getting to know each other a little.



Digital Technologies

At the end of 2019, the teachers of Lynwood Park attended a professional learning session about the new Digital Technologies strand from the Science syllabus. The Digital Technologies curriculum is a new curriculum area which offers children the opportunity to become innovative creators of digital solutions, effective users of digital systems and critical consumers of information conveyed by digital systems.

During the session, teachers explored in-depth the difference between digital technology and information and communication technologies (ICT). **ICT** is about understanding how to use the **ICT** capabilities whereas **digital technologies** is about understanding HOW those capabilities are created.



Since returning to school this year, teachers have been gradually introducing activities into their classrooms that will help students to understand the digital technologies content and why understanding how digital technologies work, is important. The activities that teachers are using, focus on providing students with authentic learning challenges that foster curiosity, confidence, persistence, innovation, creativity, respect and cooperation.

[Here are some students in action exploring the Digital Technologies strand!](#)



Life Skills - Cooking Term 3 2020



Stage 3 have been cooking up a storm in the staffroom. We followed a Country Women's Association recipe to make some scrumptious scones. We topped them off with jam and cream!

NSW Health Primary School Mobile Dental Program

Dear Parents and Carers,

Dental staff from the NSW Health Primary School Mobile Dental Program will be visiting Lynwood Park Public School on **Wednesday 23rd & Thursday 24th September** to provide students from K-6 with a free dental check.

On the day, we will be providing the following services:

- Comprehensive oral examination (Check up)
- Oral health information (Diet and tooth brushing advice)
- Height & weight check
- Fluoride application (if consented to on form)
- Dental X-ray (if required, and consented to on form)



At the conclusion of the appointment, students will be given a tote bag which includes a toothbrush, toothpaste, and a bouncy ball.

A letter will be sent home via post detailing the outcome of the appointment within 10 days. If required, your child will be placed on a waiting list for a follow up appointment for further treatment, and you will be contacted when an appointment becomes available. These appointments are offered on a priority basis, with urgent treatment needs being offered appointments first.

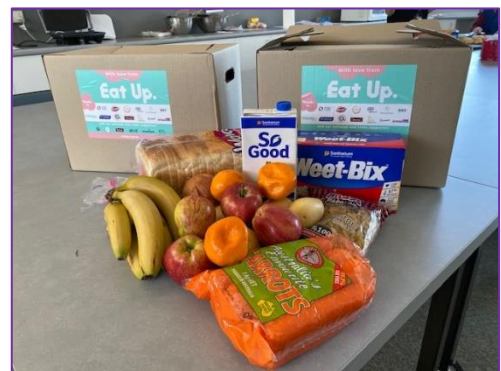
In addition to regular infection control procedures, additional processes are in place due to COVID-19. These include daily screening of staff prior to the shift (temperature & questionnaire), increased personal protective equipment use, and maintaining physical distancing between staff on site.

Please make sure you fill in both the blue Consent Form (4 pages) and the white Child Dental Benefits Schedule forms and return to the school by 1st September 2020.



Eat Up Lunch Program

Lynwood Park have been fortunate to access support from 'Eat Up', an Australian charity who deliver sandwiches to students all around Australia. It is believed that up to 1 in 8 Australian children arrive at school hungry or without food each day. Without food, concentration is compromised, which means learning is compromised. This means their future is compromised.



Students at Lynwood Park who don't bring lunch to school are now offered a fresh or toasted cheese sandwich. The sandwiches can also be used for students arriving at school who are hungry due to missing breakfast.

During the current COVID situation, 'Eat UP' have also provided some pantry supplies to assist families at this difficult time. We are very grateful to 'Eat UP' for supporting our students and families.

Mrs Stewart - Coordinator

In school T-Ball Competition

Since returning from our period of 'learning from home', our students have been missing their opportunity to play PSSA sport competitions on Fridays. We have been holding an in-school round robin T-ball competition at lunchtimes involving students from years 3-6. It has been great to see the students improving their skills, encouraging others and having fun. We have 1 more preliminary round game to complete and team D are currently in the lead. A final between the 2 top teams will be played in the coming weeks.

Mrs Stewart – Softball Coach



 **NSW Department of Education**
11 August at 19:16 · 🌐

If your child is unwell, get them tested and keep them at home until they receive a negative result. Read the latest COVID-19 advice for families on <https://education.nsw.gov.au/covid-19/advice-for-families>

COVID-19 symptoms can include:


fever


sore throat


cough


shortness of breath.

If your child is sick, keep them at home and get them tested for COVID-19.

Please remember, don't send your child to school if they are showing flu like symptoms. Even if you are certain that your child does not have COVID-19 or their test has come back negative, don't send them to school if they are displaying symptoms.



Tell Them From Me parent survey Frequently Asked Questions

Centre for Education Statistics and Evaluation

1. What is the Partners in Learning parent survey?

The Partners in Learning parent survey is part of the *Tell Them From Me* suite of surveys on student engagement. The parent survey helps to clarify and strengthen the important relationship between parent and school.

The parent survey is anonymous and individuals cannot be identified from the information they provide. It can be used either as a one-off survey or to identify trends within schools over time and better inform school priorities. The survey is held once a year (Term 3/4), and is run at the same time as the Focus on Learning teacher survey and the second optional student survey.

Over 960 schools in NSW participated in the 2017 parent survey.

2. What are the benefits for my school?

The parent survey provides school principals and school leaders with parents' perspectives on their school as well as learning at home. Communication between parents and staff, activities and practices at home, and parent views on the school's support of learning and behaviour help build an accurate and timely picture that schools can use for practical improvements.

Data reports are provided to school leaders within three business days of the survey closing. Schools will be able to access a 'one click' PDF summary report of their school's results. A summary 'radar' chart shows your school's average scores on a ten-point scale for eight measures. The report also shows the distribution of answers for each measure which allows school leaders to target specific issues. Your school's results will be compared against state-wide averages.

3. How does this survey relate to the school planning cycle?

The *Tell Them From Me* student, parent and teacher surveys provide valid and reliable data to help schools during the 2018-2020 planning cycle, including with the annual review of strategic directions, development of improvement measures and milestones, self-assessment against the School Excellence Framework and preparation of the annual school report.

The survey data can help schools:

- understand parents' perspectives on their children's experience at school, including teaching, communication and the school's support of learning and behaviour
- understand parents' perspectives on activities and practices at home related to their children's learning
- provide evidence of areas of strength to support self-assessment and reporting
- engage the school community in discussions to identify strategic directions for school improvement
- establish quantitative improvement measures and help schools track achievement against them.

4. How are these surveys different from existing departmental surveys on the School Survey System?

Schools have access to national and Departmental surveys of students, parents and teachers through the School Survey System. The *Tell Them From Me* suite of student, parent and teacher surveys incorporate many of the same topics and have similarly worded questions. However, they also:

- include a number of different measures
- bring student, teachers and parent surveys together in a single reporting tool
- will include data collected over multiple years
- enable comparison with state averages.

5. How will the student, parent and teacher surveys assist the department to support better student outcomes?

The department is committed to using data, evidence and evaluation to inform its planning and practice. The survey data allows the department, through the Centre for Education Statistics and Evaluation (CESE), to analyse results at a state-wide system level as well as in comparison with other data sources, to understand better the impact of parent and student engagement, wellbeing and teaching practices on student outcomes.

6. What kind of questions will the parent survey ask?

The survey questions aim to understand parents' perspectives on their child's experience at school, including teaching, communication and the school's support of learning and behaviour. The survey also helps schools understand parents' perspectives on activities and practices at home related to their child's learning.

Schools will also have the option to include their own custom questions in closed and open-ended formats. Individual responses to the open-ended questions will **not** be passed on to CESE researchers and schools will not be able to identify parents based on their responses.

The survey questions relate to the following drivers of student engagement:

Parents feel welcome	Parents are informed	Parents support learning at home
School supports positive behaviour	Safety	Inclusion
Communication preferences	Parents' participation at school	School supports learning

7. How does my school participate in the surveys?

CESE has invited expressions of interest from all schools for the 2018 surveys. To participate in the parent survey, schools must also participate in the student survey. Some exceptions do apply to schools in special circumstances, such as infants schools and schools for specific purposes (SSP schools).

8. How many parents at my school can take part?

All parents are encouraged to take the survey. CESE will provide schools with advice on different ways to engage parents.

Parents can complete a different survey for each child they have at the school if they wish.

9. What is the cost to my school?

The surveys are provided free of charge to schools. In return, schools are asked to encourage as many parents as possible to complete the survey. CESE may also ask schools to take part in a feedback questionnaire once the surveys have finished.

10. How will the survey be conducted?

The survey is conducted entirely online at home or on public computers, during the specific survey window. For 2018, this will take place during Term 3/4. The survey will take around 15 minutes.

11. How will parent anonymity be ensured?

To protect parent anonymity, schools will create a unique URL that will allow access to the survey for their school only. The school will distribute this unique URL to parents, generally via the school newsletter. Data suppression rules are applied to the school reporting tools where there are fewer than five responses. In other words, schools only see responses to questions which have been answered by five or more parents.

12. Will support be available to schools during the survey period?

Schools will have access to technical support provided by *The Learning Bar*, the company that has been contracted to supply the surveys for the department. Note that *The Learning Bar* collects survey information directly from parents in order to create reports for schools. The department also receives a data file containing these anonymous responses for research purposes.

A free-call telephone number and email address will be provided to participating schools. Support will be available every day during term time between 8.30am and 4.30pm, before, during and after active survey periods.

13. Will training be available to school coordinators?

Online live training and information webinars will be offered to all schools. All school coordinators and principals are encouraged to attend one of these training sessions prior to the survey window. There will also be additional webinars offered during and at the end of the survey period providing information about how to interpret the reports and analyse the data provided by the surveys. Recordings of the training webinars are available in the *Tell Them From Me* online portal in the 'Knowledge Base' tab, under 'My Resources'.

14. Can I see the survey questions?

Schools will be able to view the surveys online via a password protected portal once they have formally committed to undertaking the surveys. The questions in PDF form are available for participating schools. Please note that the survey questions are the intellectual property of *The Learning Bar* and must not be distributed beyond your school or used in any manner other than that stipulated by the department.

15. How does the parent survey relate to the student and teacher surveys?

CESE is offering the full suite of *Tell Them From Me* surveys (student, parent and teacher surveys) to ensure schools can capture the views of students, teachers and parents. The surveys are complementary.

For more detail on each of the surveys, see the survey website: <http://surveys.cese.nsw.gov.au/>

16. Will the surveys all take place at the same time?

The student survey will take place in Term 1 and (optionally) Term 3/4. The parent and teacher surveys will take place at the same time as the second student survey in Term 3/4.

17. Can our school do one of the surveys and not the others?

Schools can take part in the Term 1 student survey without taking part in either the teacher or parent surveys. However, we ask that schools commit to do the student survey to be able to run the parent and/or teacher survey. Some exceptions do apply to schools in special circumstances, such as infants schools and schools for specific purposes (SSP schools). The parent and teacher surveys are designed to complement the student survey.

18. My school is small. Will the survey work for me?

To protect student and parent confidentiality, data suppression rules do apply where fewer than five parents answer a question. This may limit the capacity of small schools to drill down into their data.

Small schools can choose to cluster together, allowing them to pool data. Clustering is completely optional. To form a cluster, all schools involved must agree. If schools form a cluster this will mean that these schools receive a report that shows the combined data from all the schools in that particular cluster. These schools will also receive their individual school report if enough data has been collected to protect student and parent confidentiality.

Please indicate whether you would like to be part of a school cluster when lodging your expression of interest.

19. Can infants schools, SSP schools or other schools with special circumstances participate?

Infants schools can take part in the parent survey, even though the student survey is only suitable for students in Years 4 to 12. SSP schools and other schools with special circumstances may do the parent and/or teacher surveys without doing the student survey after first enquiring with CESE.

20. Will the parent survey be available in languages other than English?

Yes. The parent survey is available in 23 languages including: Arabic, Chinese - simplified, Chinese - traditional, English, Filipino, Greek, Italian, Karen, Khmer, Korean, Persian, Polish, Portuguese, Punjabi, Russian, Somali, Spanish, Tamil, Thai, Turkish, Ukrainian, Urdu and Vietnamese.

21. Who will be able to see my school's data?

Schools will be able to see their own aggregated data. They will not see individual parent responses.

CESE researchers will have access to anonymous survey response data for system-wide analysis. The researchers are interested in trends only, not individual responses. CESE will not be able to see responses to your school's open-ended custom questions. No parent will be identified in any publication. No school will be identified unless they have given permission.

As with other departmental data, your Director, Public Schools and selected policy staff from State Office may view your school's report.

Schools are encouraged to use the data as part of their ongoing community and stakeholder discussion.

22. What will happen next for schools that choose to participate in the parent survey?

Early Term 3	Training for school principals and coordinators in using the survey website conducted by webinar. Helpdesk support will be available. Schools setup their surveys and create a unique URL for their school for distribution to parents.
Mid-Term 3 – beginning of Term 4	Active period for surveys. Helpdesk support will continue to be available. Training for school principals and coordinators in using the survey website continues to be conducted by webinar. Schools receive their reports three days after closing their survey. Training for school principals and coordinators in analysing school survey results conducted by webinar.

What is CESE?

The Centre for Education Statistics and Evaluation (CESE) is part of the NSW Department of Education.

CESE has been established to improve the effectiveness, efficiency and accountability of education in New South Wales.

CESE identifies and shares what works, creating new opportunities to improve teaching and learning across all of education.

More information about CESE is available at: www.cese.nsw.gov.au

What is *The Learning Bar*?

The Learning Bar is a Canadian education company that specialises in school surveys for both primary and secondary students. Its survey, *Tell Them From Me*, is the largest national school survey in Canada, used in nine of Canada's ten provinces. More than 6,300 schools and 5.4 million students have participated in the survey. Australian schools have been participating in the *Tell Them From Me* surveys since 2012.

The Learning Bar is led by Dr J Douglas Willms. Dr Willms is the President of the International Academy of Education, a Member of the US National Academy of Education and a Fellow of the Royal Society of Canada. He recently held the Tier 1 Canada Research Chair in Literacy and Human Development for 14 years. Dr Willms has played a lead role in the development of questions for the OECD's Programme for International Student Assessment (PISA).

More information about *The Learning Bar* is available at: www.thelearningbar.com

If you have any questions about the parent survey, please contact CESE via email: TTFM@det.nsw.edu.au or by telephone: **1300 131 499**.



INVITE YOU TO COME AND TRY

Baseball

WHEN Sunday 16 August 11am - 1pm
Sunday 23 August 10am - 12pm

WHERE Ashley Brown Reserve
Northcott Road, Lalor Park
(carpark is off Kennedy Parade)

COST Free

AGE T-Ball - 4 - 8yr olds
Modball - 9yr olds
Liveball - 10yr olds+

FOR MORE INFO CONTACT

David Rowley (President) on 0418 241 194
or kingslangleybaseball@gmail.com

